

# FOR SALE

20 ACRES

\$12,000,000.00



East Prado Road  
San Luis Obispo, California

# ROSSETTI COMPANY

Commercial Real Estate

1301 Chorro Street | San Luis Obispo, CA 93401

P: 805.544.3900 | F: 805.544.3922

[www.rossetticompany.com](http://www.rossetticompany.com)

Location: Prado Road  
Price: \$12,000,000.00  
Type: Vacant Land  
Total size: 20 acres  
Zoning: Margarita Area Specific Plan  
Business Park Designation

Comments: **Parcel has been recently annexed to the City of San Luis Obispo.** It is on the market for the first time. It is located in the Margarita Area Specific Plan on Prado Road, and will be adjacent to business park and residential zoned properties. Prado Road is expected to be a main artery connecting the south end of the city with Highway 101.

PRESTON THOMAS  
[preston@rossetticompany.com](mailto:preston@rossetticompany.com)

DRE Lic. #01378821

JOHN ROSSETTI  
[john@rossetticompany.com](mailto:john@rossetticompany.com)

DRE Lic. #00524464

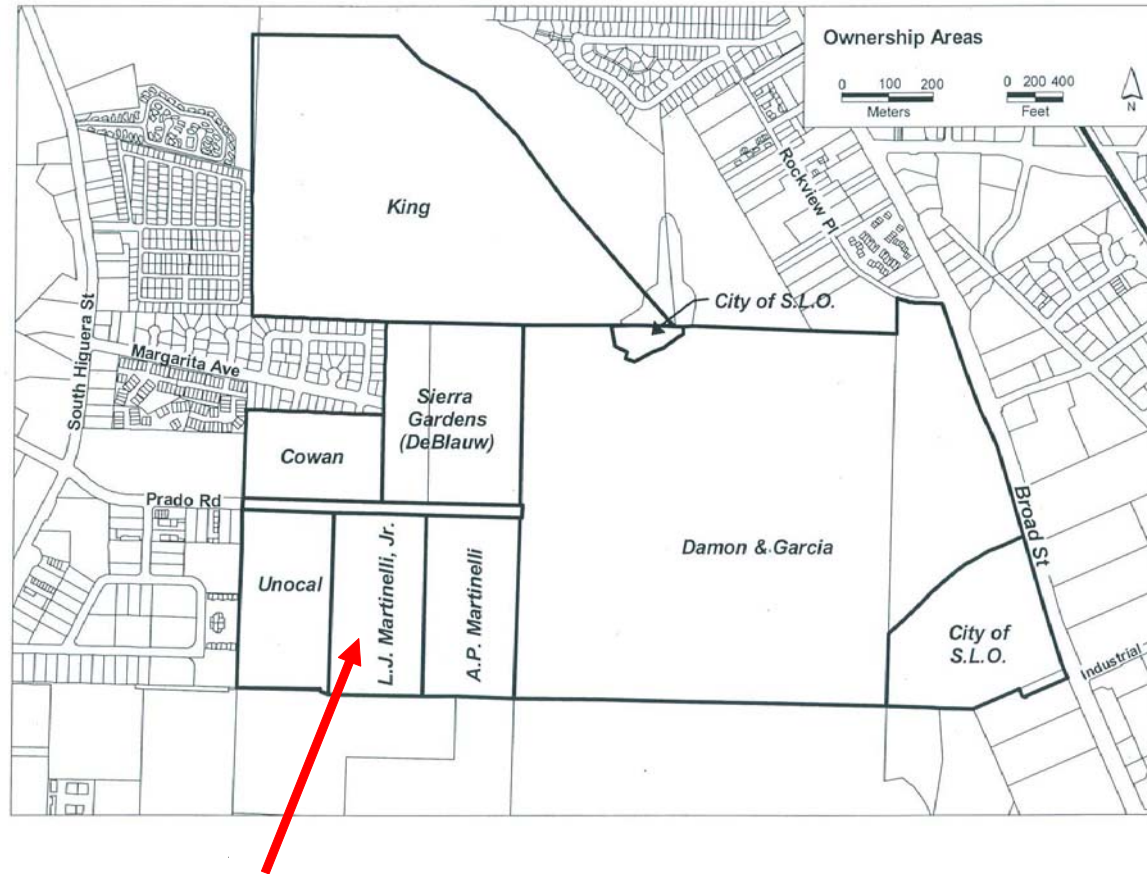
THE INFORMATION CONTAINED HEREIN HAS BEEN OBTAINED FROM SOURCES WE DEEM RELIABLE. WHILE WE HAVE NO REASON TO DOUBT ITS ACCURACY WE DO NOT GUARANTEE IT.



# Martinelli Property Prado Road San Luis Obispo, California

Implementation

Margarita Area Specific Plan



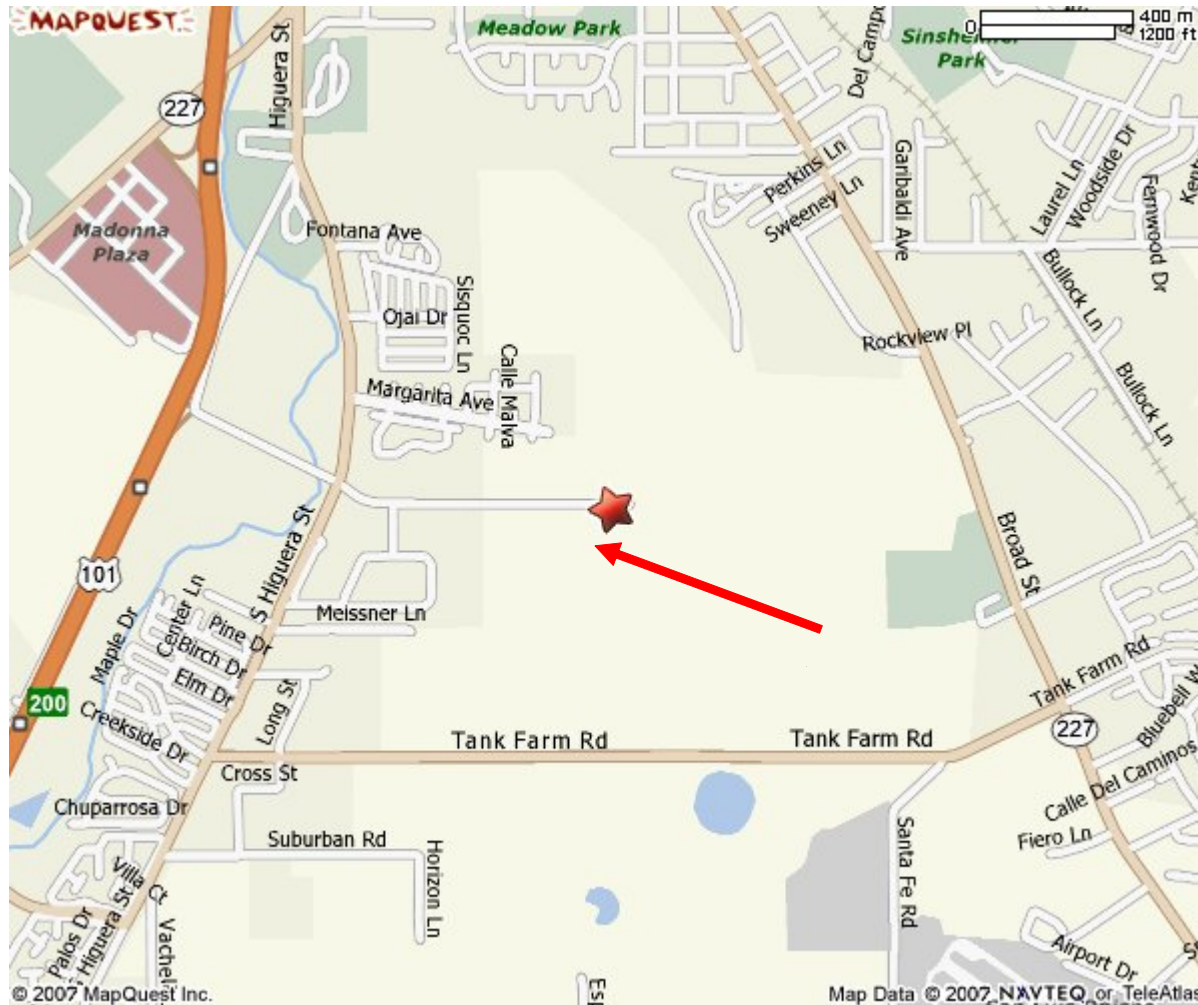
PRESTON THOMAS  
preston@rossetticompany.com

DRE Lic. #01378821

JOHN ROSSETTI  
john@rossetticompany.com

DRE Lic. #00524464

# Martinelli Property Prado Road San Luis Obispo, California



PRESTON THOMAS  
preston@rossetticompany.com

DRE Lic. #01378821

JOHN ROSSETTI  
john@rossetticompany.com

DRE Lic. #00524464