

FOR LEASE

1,000 square feet
of new office space

**FOUR MONTHS'
FREE RENT**



**Tank Farm Office Park
San Luis Obispo, California**

ROSSETTI COMPANY

Commercial Real Estate

1301 Chorro Street | San Luis Obispo, CA 93401

P: 805.544.3900 | F: 805.544.3922

www.rossetticompany.com

Location:	689 Tank Farm Road Near corner of Highway 227 (Broad Street) and Tank Farm Road
Price/SF:	\$1.50, NNN FOUR MONTHS' FREE RENT!!
Type:	Office
Total square feet:	1,000
Zoning:	BP (Business Park)
Parking:	1 to 300 for professional tenants 1 to 200 for medical tenants
Comments:	New two-story office building located just off the intersection of Broad Street and Tank Farm Road. The building can accommodate professional and MEDICAL office tenants. Owner will provide a \$50.00 per square foot tenant improvement allowance.

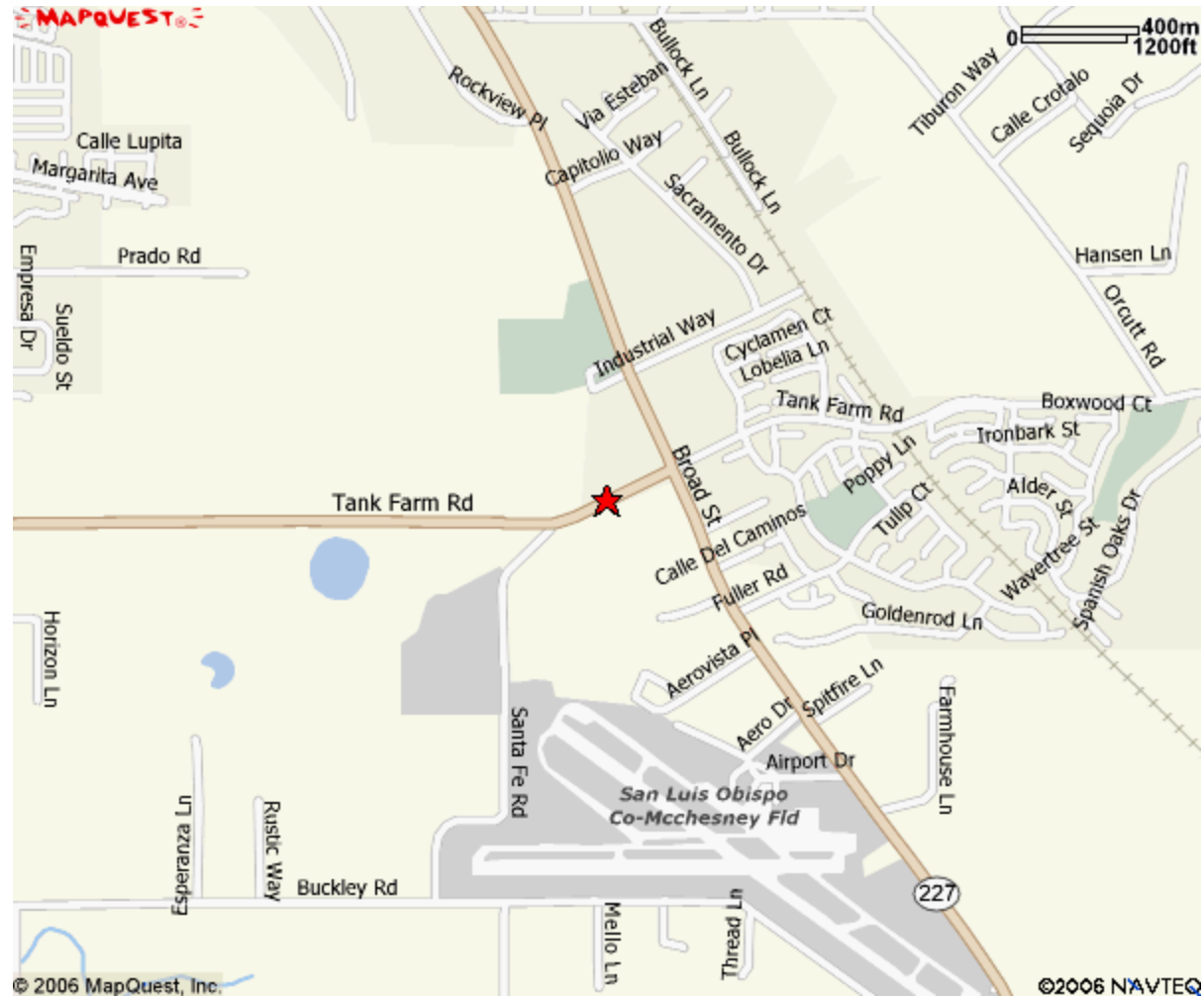
PRESTON THOMAS
preston@rossetticompany.com

DRE Lic. #01378821

THE INFORMATION CONTAINED HEREIN HAS BEEN OBTAINED FROM SOURCES WE DEEM RELIABLE. WHILE WE HAVE NO REASON TO DOUBT ITS ACCURACY WE DO NOT GUARANTEE IT.



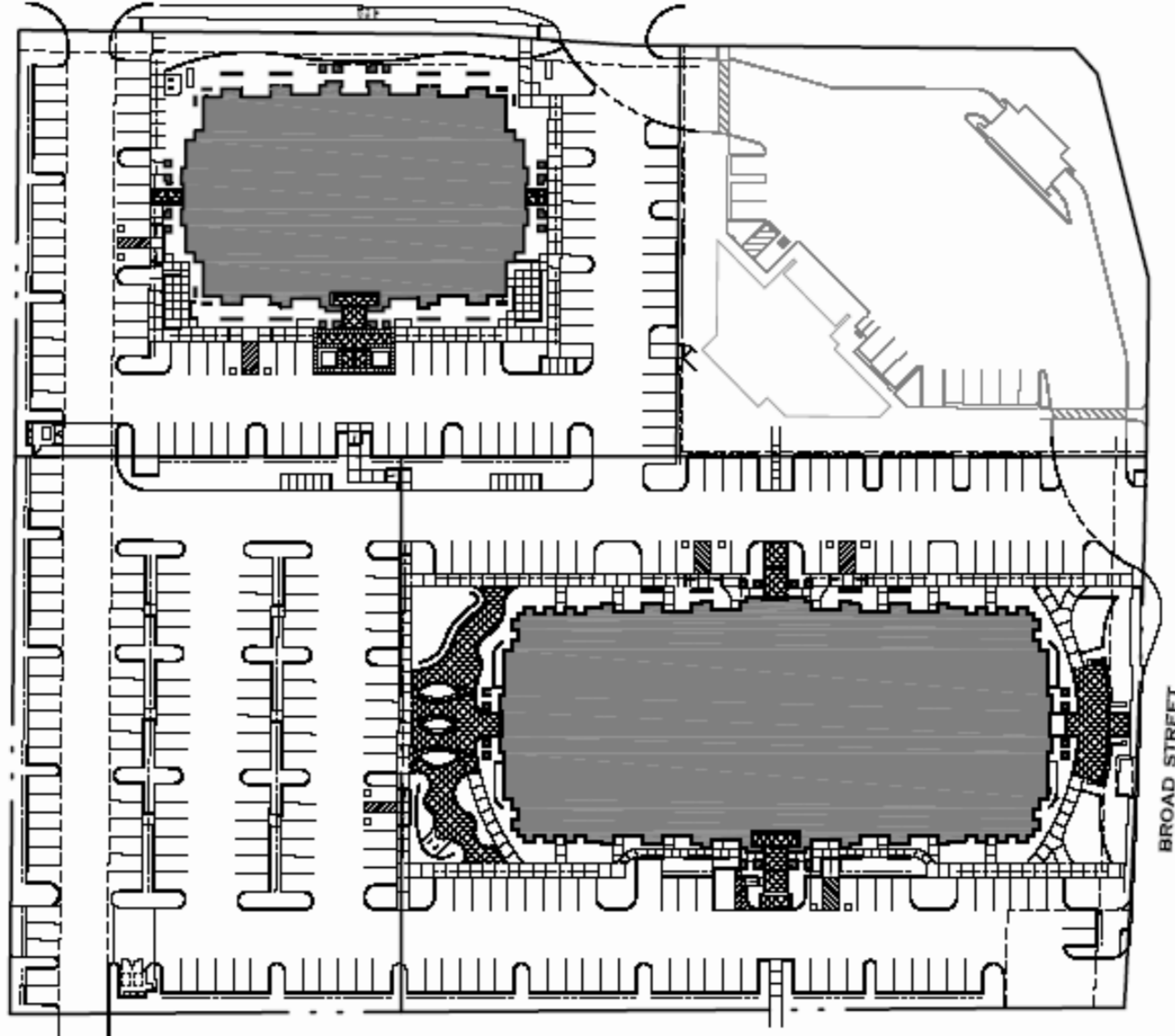
Tank Farm Office Park San Luis Obispo, California



PRESTON THOMAS
preston@rossetticompany.com

DRE Lic. #01378821

Tank Farm Office Park San Luis Obispo, California



Site Plan

PRESTON THOMAS
preston@rossetticompany.com

DRE Lic. #01378821

Tank Farm Office Park San Luis Obispo, California



**BUILDING 200
WEST ELEVATION**



**BUILDING 200
EAST ELEVATION**

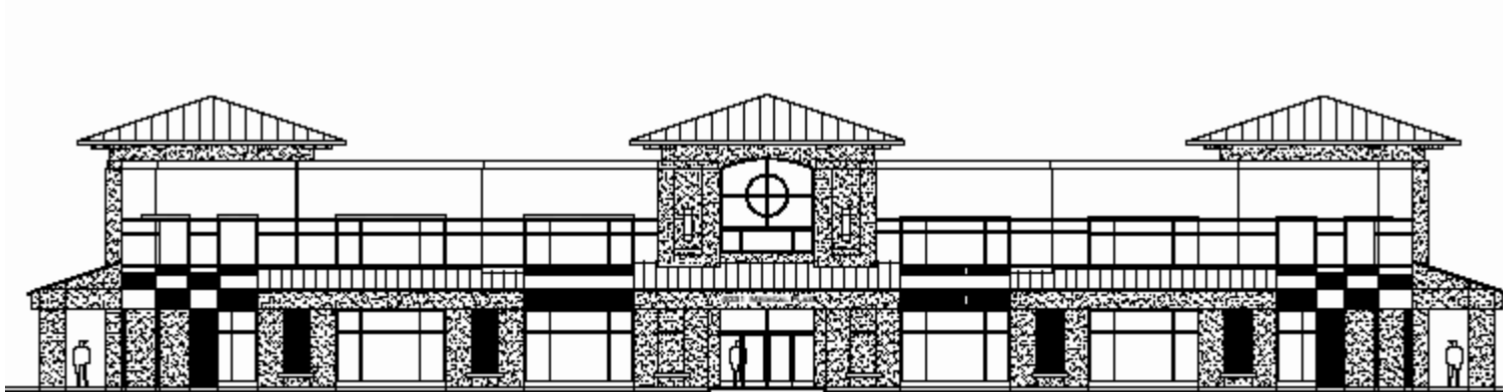
PRESTON THOMAS
preston@rossetticompany.com

DRE Lic. #01378821

Tank Farm Office Park San Luis Obispo, California



**BUILDING 200
NORTH ELEVATION**



**BUILDING 200
SOUTH ELEVATION**

PRESTON THOMAS
preston@rossetticompany.com

DRE Lic. #01378821